

BOTSWANA-NAMIBIA-ZIMBABWE 12 DAY TOUR OCT 2023



The experience

To kick off this great three-country trip with a focus on Botswana as well as Namibia and Zimbabwe, you will experience the legendary Victoria Falls. In the game-rich Caprivi Strip, the Okavango Panhandle and Okavango Delta with Moremi / Khwai Game Reserve and the Makgadikgadi Pan and the Chobe National Park, explore the wildlife by off-road vehicle, boat and mokoro.

Again and again you meet the people who live here. You stay at the pulse of nature in idyllically situated beautiful lodges with a cozy safari ambience.

- ▶ A unique safari through **Botswana** blessed with incredible wildlife and scenic beauty. The heart of this journey is the intense experience of the Okavango Delta . You will spend the night on a houseboat at the Okavango Panhandle and three nights in a rustic safari camp on the Khwai River, directly adjacent to the UNESCO World Heritage Site Okavango Delta. On land (off-road vehicle) and on water (houseboat, motorboat, mokoro) you will experience the moods and the wildlife of the delta!
- ▶ **Caprivi, Chobe and Salt Pans** : You will cross the beautiful Caprivi with a boat trip on the Kwando River and you will be off-road on an excursion in the salt pans area of the Makgadikgadi Pans National Park. Extensively dedicated to the Chobe National Park with game drive and a sunset cruise. Unforgettable!
- ▶ **Victoria Falls:** Extensive visit to the most beautiful viewpoints of the legendary Victoria Falls and two nights in the Kingdom Hotel, which is walking distance from all the main attractions that Victoria Falls has to offer.



Day 1 & 2 - VICTORIA FALLS (Zimbabwe)



Day 1 – ARRIVAL IN VICTORIA FALLS

Day 1 – On arrival at Victoria Falls Airport in Zimbabwe, you will be welcomed by your tour guide who will accompany you on this unique round trip. For the first two nights in Africa, you will stay in the spectacular Kingdom Hotel, in the center of Victoria Falls town and walking distance to the Victoria Falls.

KINGDOM HOTEL

It may look like the city of a lost civilisation but the Kingdom Hotel is one of Victoria Falls best known family hotels. Expect all the comforts of a modern resort geared up in every way for your maximum comfort and enjoyment.

The Kingdom Hotel has become a firm favourite with families, groups and individual travellers who are looking for a quality yet affordable Victoria Falls Hotel option. The hotel is centrally located within the small resort town of Victoria Falls, Zimbabwe, close to all the major attractions including the entrance to the Victoria Falls rainforest which is a short walk away.

Day 2 - This day is dedicated to exploring the vast natural spectacle of the Victoria Falls, which plunges more than 100 meters over a length of 1.7 km. A beautiful walkway leads to several vantage points on the various sections: Devils Cataract, Main Falls, Horseshoe Falls, Rainbow Falls, Danger Point. The everlasting fine spray has created a small tropical rainforest next to the footpath. Optionally, you can take a helicopter ride over the falls to get a bird's eye view of the true size of the giant waterfalls.

Optional other activities: Zambezi River Cruise, White Water Rafting, Elephant Encounter, Gorge Swing, Zip Line, Boma Dinner and Drum Evening.



Day 3 - CAPRIVI - Namibia



DAY 3: This morning we will drive into Botswana and at the Ngoma bridge into the Namibian Caprivi. The narrow piece of Namibia, which almost reaches the Victoria Falls between Botswana and Zambia, was named after the former Chancellor Leo Graf von Caprivi. Caprivi's goal was to make a connection to today's Tanzania, then German East Africa, but did not succeed. Today the Caprivi is famous for excellent safari opportunities and officially operates under the name Region Zambezi. Tonight you will stay at Namushasha River Lodge right on the river Kwando.

You will enjoy a beautiful boat safari where you will get to know the birdlife and almost always observe hippos and crocodiles. Dinner will be enjoyed at the lodge.

Day 4 & 5 - Okavango Houseboat (Botswana)



Day 4: After breakfast we will drive west to the beginning of the Caprivis in Divundu, turn south, cross the small Mahangu National Park and pass the border into Botswana again at Shakawe. Here begins the world's only natural paradise Okavango Delta. You are in the Okavango Panhandle area, the pan handle.

This means that the river coming from Angola over 1,600 km long, Okavango from here increasingly wider, before it then pan-shaped and forms thousands of canals and islets. In Sepupa you will be picked up by motorboat and cross the Okavango River to Seronga. Here you board one of your group of exclusively available houseboats! While the houseboat glides leisurely downstream, let your eyes wander over the gently rolling reeds on the shore and look out for crocodiles, hippos, situngas and bushbucks that like the marshy terrain. Even elephants sometimes show up.

The panhandle is especially famous for its abundance of fish and birds. Watch as the sun disappears on the other side of the river. In the evening, a reed belt is anchored and dinner is served on board the Ngwesi houseboat.

Day 5: Enjoy the early morning mood aboard the houseboat, where after you will go ashore in the village of Seronga. Depart to Maun village (+/- 5 hour drive) where you will spend the night at Maun Lodge. Optional scenic flight (US\$225pp)



Day 5, 6 & 7 - Khwai River (Botswana)

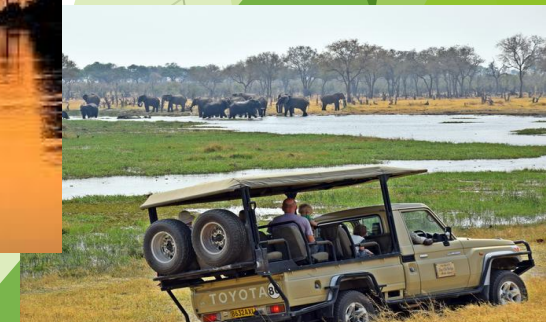


DAY 5 - After breakfast at Maun Lodge, you will depart on a Land Cruiser game viewer to Khwai (3 - 4 hours drive) where you will camp for the next 3 nights. The Khwai River is situated on the Northern side of Botswana, near a village called the Khwai Village. This village started as a small San settlement and has developed and expanded over the past few years, proving to be an interesting cultural enclave in its own right. It is also the place where non-hunting Botswana safaris originated. The Khwai River can be viewed at the North Gate of the Moremi Game Reserve and has recently earned a strong reputation as being one of the best game areas in Botswana, offering spectacular wildlife viewing and photographic opportunities.

You will be accommodated in a tented camp in the middle of the bush, where you will experience the closeness of nature, with morning and afternoon game drives.

Day 6 - will be spend in the Khwai River Area, where a mokoro trip will be enjoyed. Traditional dug-out canoe or mokoro trips have over the years become a very popular way for travelers to experience the tranquility of the Okavango Delta. It is not surprising that regardless of their budget, visitors wanting a real insight into the lives of the people of the Okavango, choose to do these trips. They are a good way to slip quietly into, and become part of, everyday life in this watery wonderland.

DAY 7 - Early morning and late afternoon game drives will be enjoyed.



Day 8 & 9- Planet Baobab (Botswana)

A night under the Milky Way in Botswana

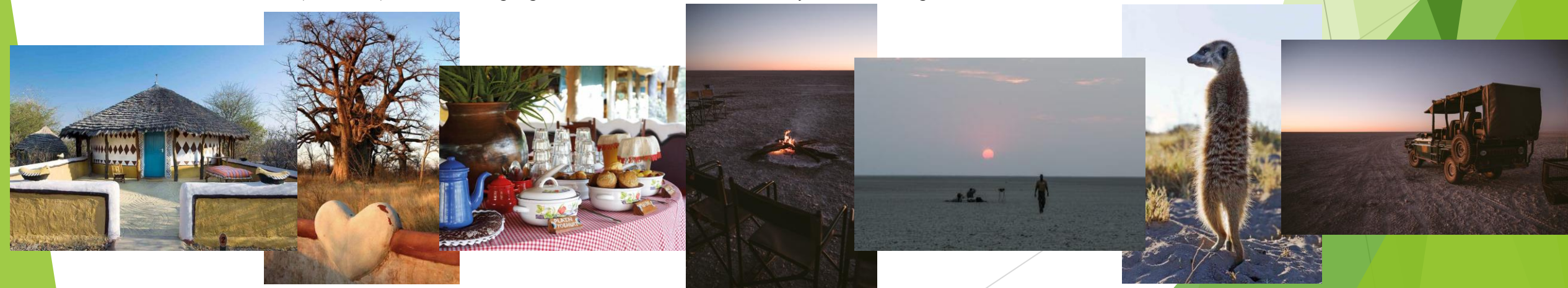


Day 8: Today we depart from Khwai Village through Maun to Planet Baobab, situated near Gwêta Village. (3 – 4 hour drive to Maun, lunch in Maun and then 3 hour drive to Planet Baobab)

This is the Baobab Capital of the World, where the average age of each tree is more than 4000 years, and the boundless lunar landscape of the Makgadikgadi Salt Pans are the size of Switzerland. How's that for awe-inspiring?

This is a quirky place in a quirky part of the world, where we live cheek to tusk with old elephants; sleep in Afro-chic Bakalanga Huts; swim in the largest, coolest pool in the Kalahari; eat the finest pan-African cuisine, and of course, drink something cold with hunters and vagabonds, travellers and locals in the funkiest bar in Africa. It's the coolest desert oasis around – and a part of Africa that few will experience, but all will remember.

Day 9: The sleep-out experience actually covers **much more than just the night under the stars**. The idea is to venture far out onto the pans where the horizon is completely flat and featureless - so flat in fact that you can see the curvature of the earth! During your pans adventure, the itinerary may also usually include interaction with a clan of habituated meerkats (not tame), which is a highlight of this excursion. This activity is exhilarating but safe!



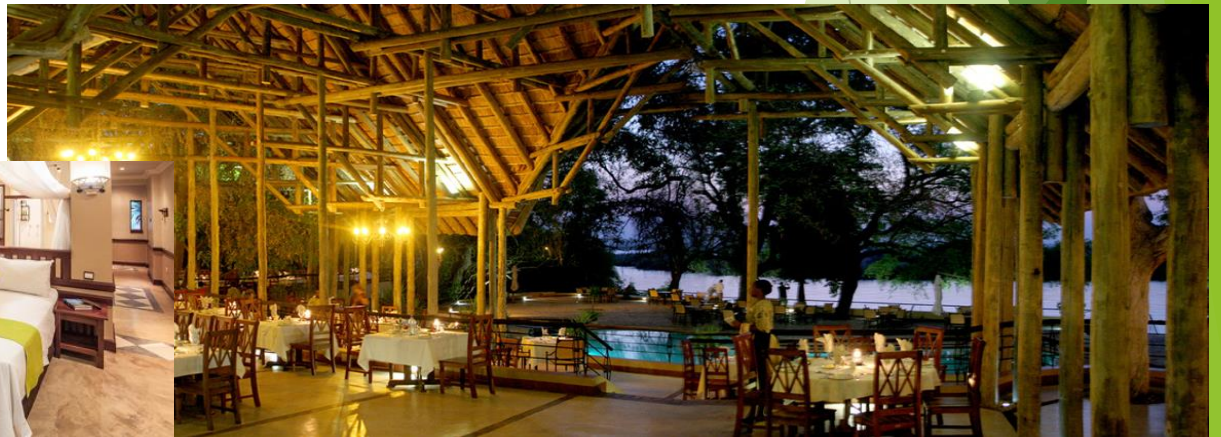
Day 10, 11 & 12 - KASANE - Botswana



Day 10: Today we will travel from Gwêta, to Kasane, (4 hour drive) where you will relax at Chobe Safari Lodge after a very hectic and busy couple of days.

Day 11: This morning you will enjoy your last game drive of the tour in Chobe National Park. After a siesta at the lodge, a spectacular sunset boat cruise will be enjoyed on the Chobe River.

Day 12: Transfer to Victoria Falls (Zimbabwe) Airport for fly out.





SWAMPLAND SAFARI TRAILS

BOTSWANA
www.swampsaf.com

P SUMMARY

ACCOMMODATION:

6 nights lodge accommodation
1 night house boat
3 nights tented camp in dome tents
1 night under the stars (bedroll)

QUOTATION INCLUDES:

Minimum number of participants (10 clients)
4 x 4 vehicles/mokoros/quantum bus
All accommodation as stated in above itinerary
All necessary camping and kitchen equipment (when camping)
Camping in dome tents with mattresses/bedding (in Khwai)
Personal extras such as towels (in Khwai)
All meals (in Khwai, Okavango Houseboat & Gweta)
Breakfast (Vic Falls, Maun & Kasane)
Mineral water, juice with meals (in Khwai)
Sunset cruises (Caprivi & Kasane)
Gamedrives (Khwai, Gweta & Kasane)
Park and entry fees in Botswana

QUOTATION EXCLUDES:

International Flights / Scenic Flight
Entrance fee to Victoria Falls
Lunches and Dinners (Victoria Falls & Kasane)
All alcoholic beverages
Personal extras such as laundry and telephone calls
Optional extra excursions
Holiday/Personal Insurance
Gratuities

